

Eden Research Laboratory

To: Brock Shelton

Date: 5/31/11

Update

From: Thomas Poth

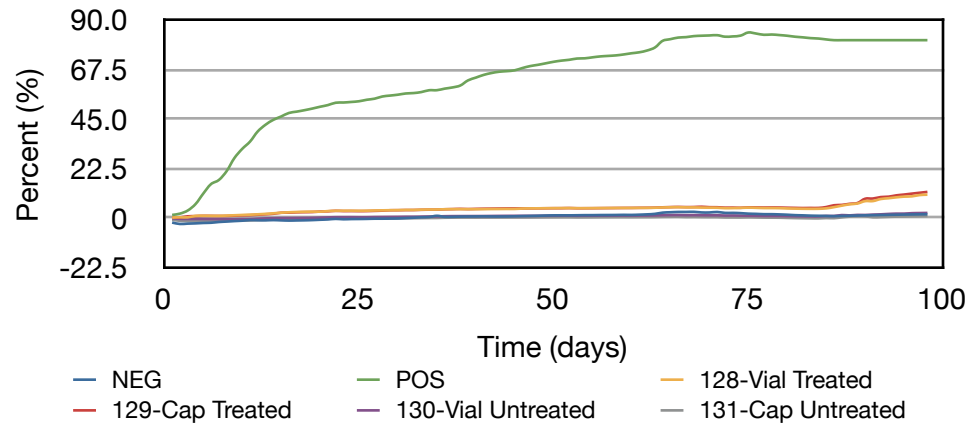
Number of pages including cover: 2

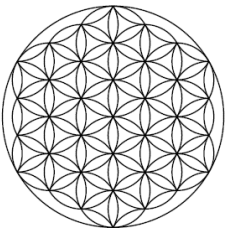
Regarding: Integrity Samples (170 Days)

2111 Menaul NE, Suite A
 Albuquerque, NM 87107
 T 505.508.3994
 M 505.550.9316
 thomas.poth@edenresearchlab.com

	Incu- lum	Nega- tive	Posi- tive	128A - Vial Treated	129A - Cap Treated	130A - Vial Un- treated	131A - Cap Un- treated
Cumulative Gas Volume (mL)	7514.7	8085.4	19371.5	14645.4	15355.0	9867.0	8488.0
Percent CH ₄ (%)	42.7	48.7	44.4	39.9	41.8	42.1	44.1
Volume CH ₄ (mL)	3205.6	3936.7	8599.7	5850.8	6412.1	4149.2	3746.1
Mass CH ₄ (g)	2.29	2.81	6.14	4.18	4.58	2.96	2.68
Percent CO ₂ (%)	43.7	37.1	40.7	39.1	37.6	35.1	37.4
Volume CO ₂ (mL)	3282.5	3000.7	7875.8	5723.0	5767.8	3458.6	3171.5
Mass CO ₂ (g)	6.45	5.89	15.47	11.24	11.33	6.79	6.23
Sample Mass (g)	1,000	20	15	30.0	30	30	30
Theoretical Sample Mass (g)	0.0	17.1	6.6	25.7	25.7	25.7	25.7
Biodegraded Mass (g)	3.48	3.72	8.83	6.20	6.52	4.08	3.71
Percent Biodegraded (%)		1.4	80.7	10.6	11.9	2.3	0.9
Adjusted Percent Biodegraded (%)		1.7	100.0	13.1	14.7	2.9	1.1

Biodegradation



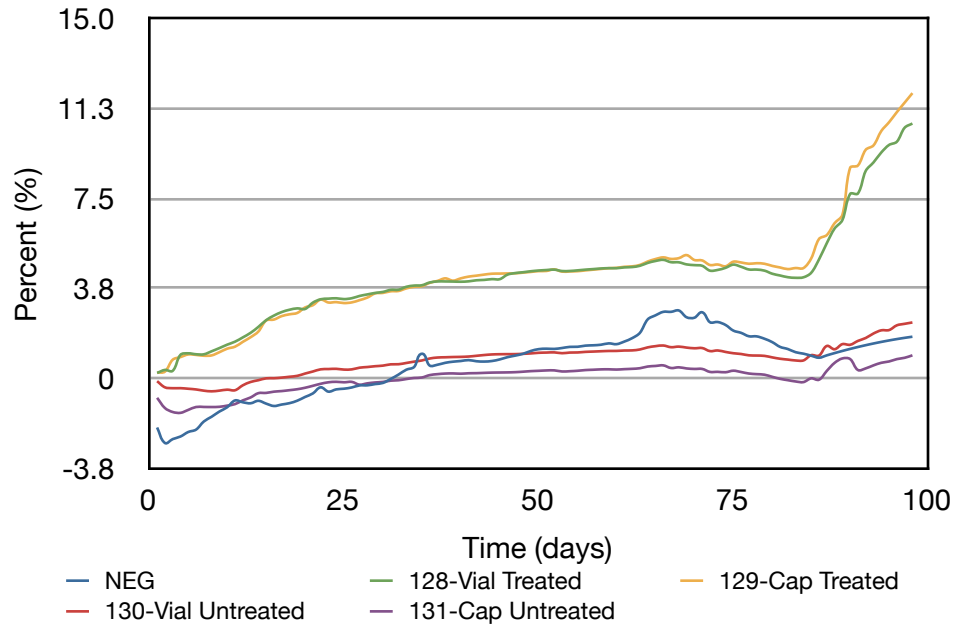


Eden Research Laboratory

Update

2111 Menaul NE, Suite A
Albuquerque, NM 87107
T 505.508.3994
M 505.550.9316
thomas.poth@edenresearchlab.
com

Biodegradation



Starting at day 87, sample gas volume was monitored on a weekly basis.

Best Regards,

Thomas Poth
Lab Director
Eden Research Laboratory